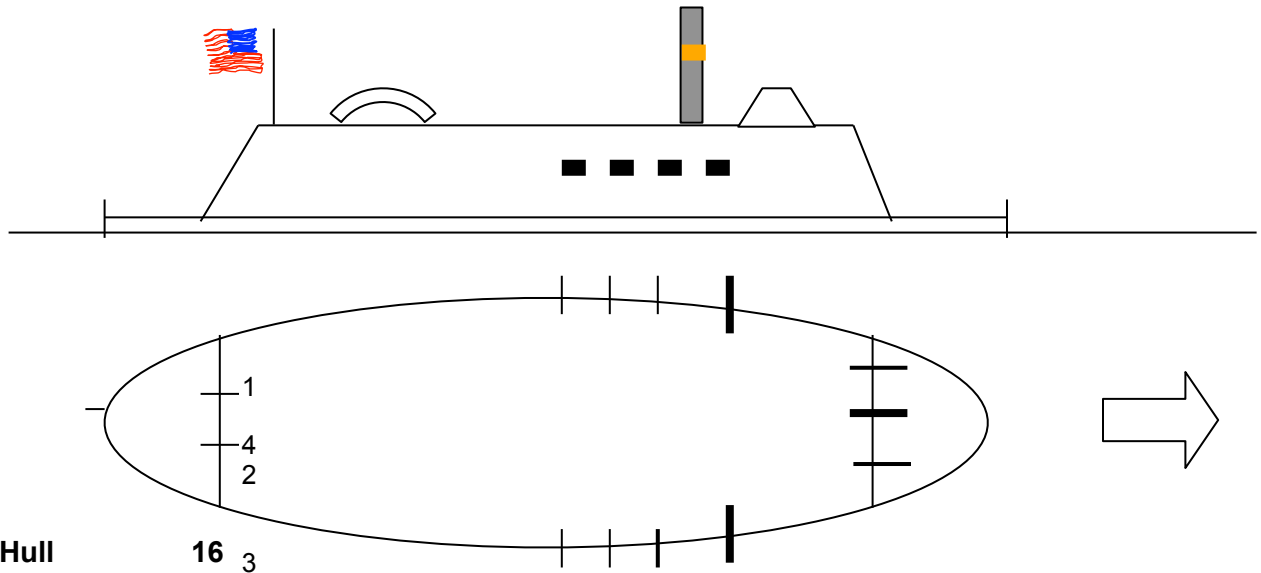


Ironclad Control Sheet



Mound City – simplified (orange funnel stripes)

Class



Hull 16 3

Steam 6 (8)

Turn 210 yd turning circle – estimate.

Batteries

- 1 port one medium smoothbore, penetrates G armour at range 5.
- 2 ahead 2/3 medium rifle, penetrates F armour at range 20.
- 3 starboard one medium smoothbore, penetrates G armour at range 5.
- 4 astern 1/3 medium rifle, penetrate F armour at range 20

Wide ports – guns bear up to 30° either side of the normal. This is a simplified version of a complex and mutable armament scheme. The rifles are re-bored smoothbores v liable to blow-up. They were replaced over time, but I am not sure what with.

Armour

Armour is G or nothing. Waterline centre is armoured, waterline bow and stern not. Armour protects guns against bow rakes. None protects guns against stern rakes. From the broadside: bat 2 is armoured only from March 1862; bat 4 is unarmoured; dice if bats 1 & 2 are hit, with a 50% chance of hitting armour. Pilot house armoured. Engines and magazine are armoured except against stern rakes. There is a 50% chance of boilers being protected by armour except v stern rakes. Plate added in March 1862 gives boilers complete protection v bow rakes. Wheel unarmoured. Deck unarmoured, tho some was sometimes improvised v high batteries. After the Battle of Plum point in May 1862 additional protection gave her an armoured knuckle v ramming.

Miscellaneous

175' x 51'2" x 6' – boat draft. Single, central paddle wheel. Wood. No ram. Renamed Baron de Kalb in Sept 1862. Side armour removed for the Red River expedition in Spring 1864 – adding 2 knots to speed. 5th class ironclad. L 1861, 63 PF.