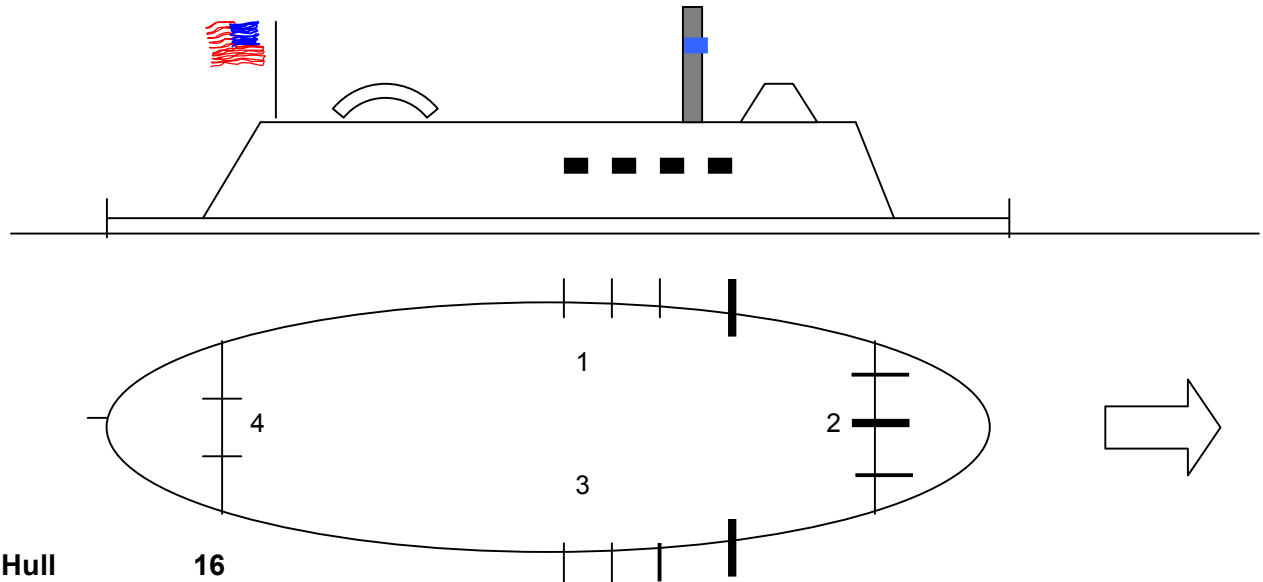


Ironclad Control Sheet



Cincinnati – simplified (blue funnel stripes)

Class



Hull

16

Steam

6 (8)

Turn 210 yd turning circle – estimate.

Batteries

- 1 port one medium smoothbore, penetrates G armour at range 5.
- 2 ahead 2/3 medium rifle, penetrates F armour at range 20.
- 3 starboard one medium smoothbore, penetrates G armour at range 5.
- 4 astern 1/3 medium rifle, penetrate F armour at range 20.

Wide ports – guns bear up to 30° either side of the normal. This is a simplified version of a complex and mutable armament scheme. The rifles are re-bored smoothbores v liable to blow-up – destroyed on any misfire. They were replaced over time, not sure what with.

Armour

Armour is G or nothing. Waterline centre is armoured, waterline bow and stern not. Armour protects guns against bow rakes. None protects guns against stern rakes. From the broadside: bat 2 is armoured only from March 1862; bat 4 is unarmoured; dice if bats 1 & 2 are hit, with a 50% chance of hitting armour. Pilot house armoured. Engines and magazine are armoured except against stern rakes. There is a 50% chance of boilers being protected by armour except v stern rakes. Plate added in March 1862 gives boilers complete protection v bow rakes. Wheel unarmoured. Deck unarmoured, tho some was sometimes improvised v high batteries. After the Battle of Plum point in May 1862 additional protection gave her an armoured knuckle v ramming. Additional protection fitted to engine in late '62 gives all-round G protection to engines and boilers.

Miscellaneous

175' x 51'2" x 6' – boat draft. Single, central paddle wheel. Wood. No ram. . Sunk May twice in action. Raised twice. In Aug 1863 a cylindrical redoubt for riflemen was added, above the wheelhouses. L 1861. 5th class, 63 PF.

